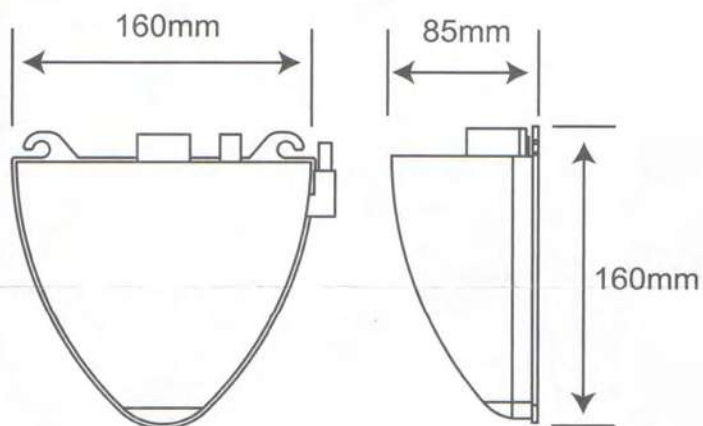
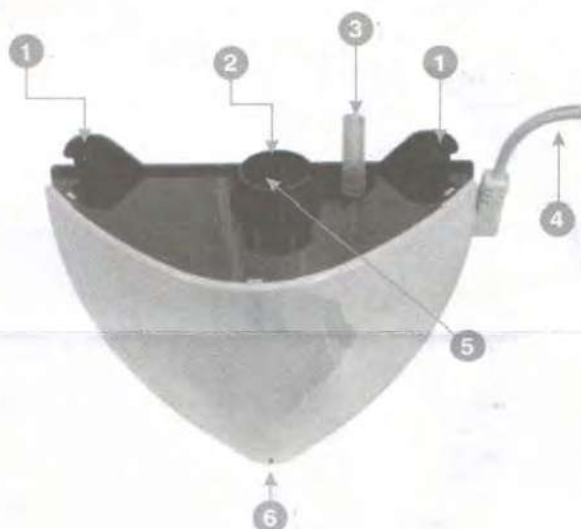


Operating instructions

Heart

Low loudness
Aesthetic design
Easy assembly



Operating instructions

1. The air conditioner drainage must fit in the water inlet of the pump ②.

Choose a suitable location to fix the pump. Screw it up ①.

2. Deeply insert the drainage pipe into the water inlet ② (equiped with filter) .

Do not bend the pipe.

3. Fit the plastic pipe in the water outlet ③ .

Pipe must not be longer than 30 mts and its inclination must not be over 1.6 mts.

4. Plug in 220-240V ④ . A green LED indicating voltage will switch on ⑥ .

When the pump is operative, the green LED will change into red.

(When you test the pump operation, the air conditioner must be switched off.

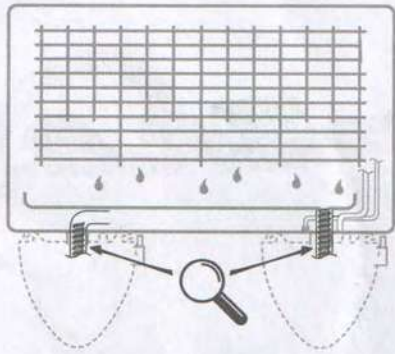
Supervise if the LED changes from red to green).

5. For the operation test, flow water very slowly in the water inlet, not exceeding more than 0.3L,

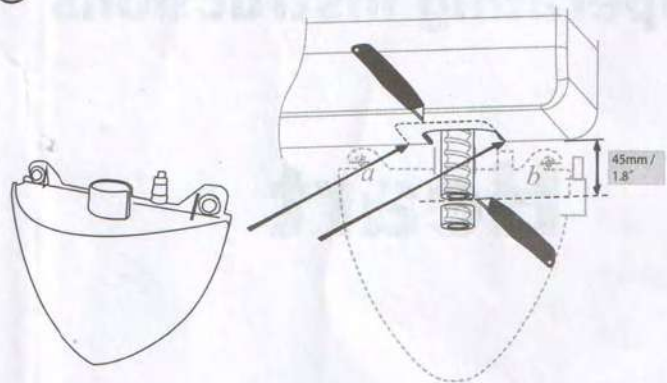
And check if the LED changes from green to red.

6. To remove the front panel, take out the screw, which is concealed by the rear "CE" label.

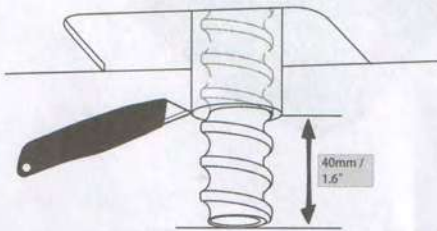
①



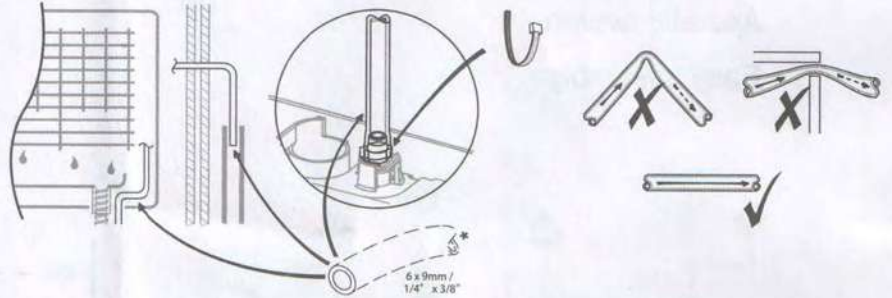
②



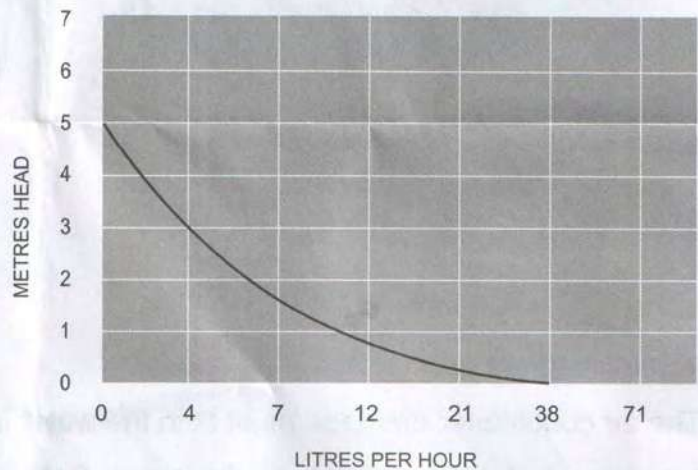
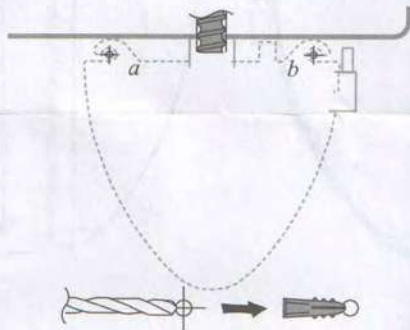
③



④



⑤



Technical Data

- Power supply : 230V AC 50/60Hz
- Max.flow: 38L/h @ 0 head
- Sound level: <30dB(A) @ 1m
- Water storage: 300ml
- Max.recommended head: 4m
- Max.unit output: 28kw / 95550 Btu/h
- Safety switch: 3A Normally closed
- Max.water temperature: 40°C

- Discharge tube: 6mmID
- Class: II appliance
- Rated: Non continuous
- IP Protection: IPX1
- Thermal protection: ✓
- Fully potted: ✓
- Run the drainage volume: 70ml
- CE marked